

Customer :

customer

Customer part :

customer part

Comment :

Comment

S1=0.22

S2=0.13

Tmax=418

Tp S2=457.0

PI=0.62

HI=65

Sample =2936.5

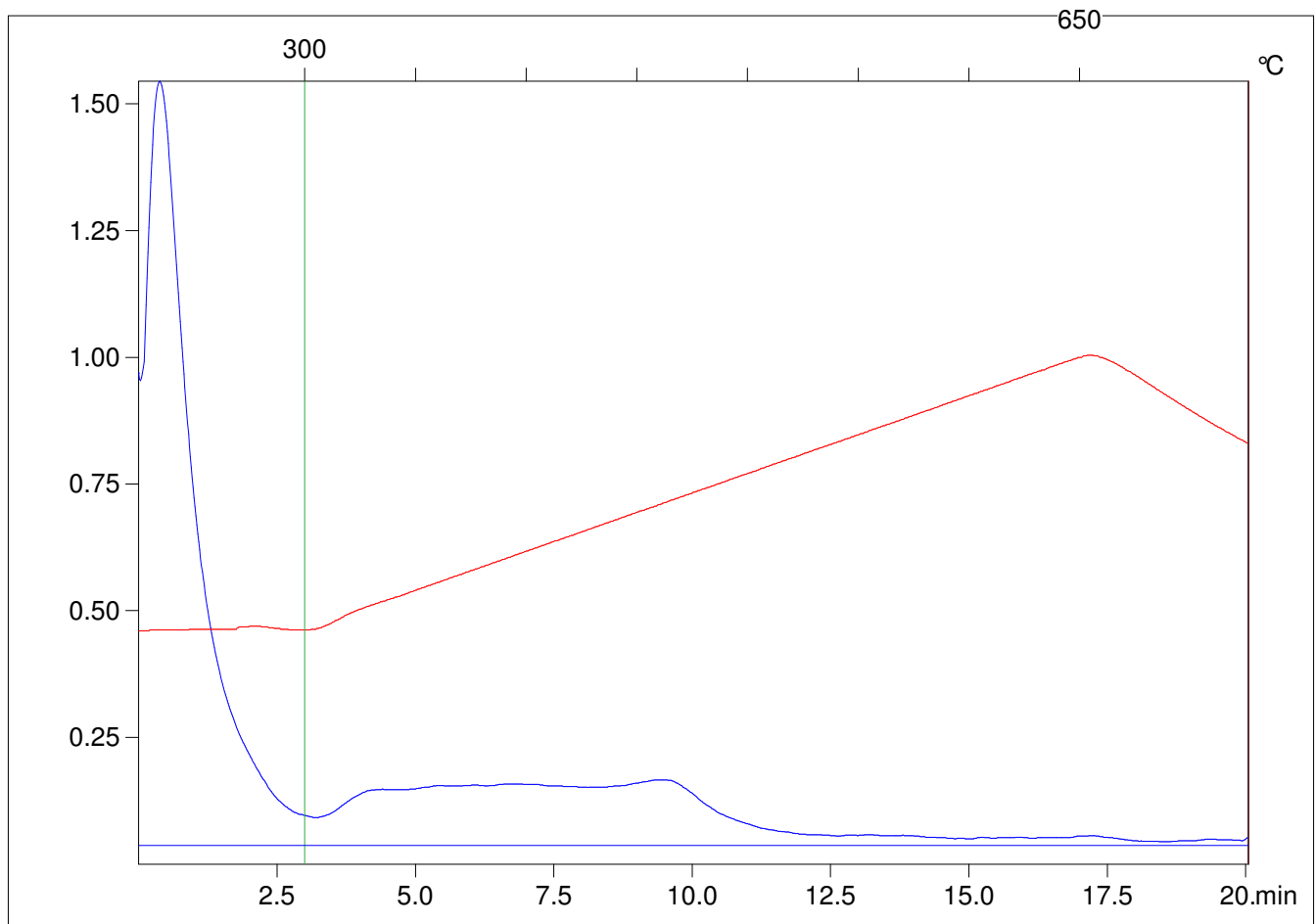
Method =Bulk Rock

Cycle=Basic

KFID(10*9)=1550

Qty =69.9

TOC=0.2



C:\VINC\PK130315\PK038.R00 : FID pyrolysis graphic

State

Pyro Status

Oxi Status